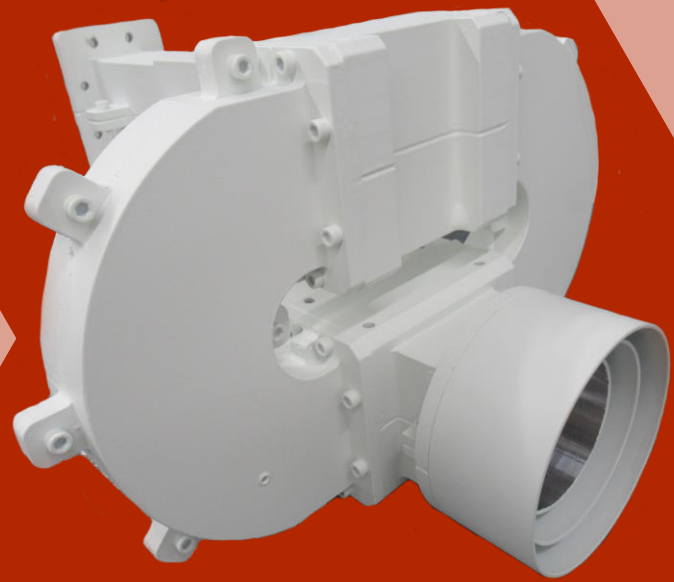




sales@ara-inc.com



TROPOSCATTER SERIES PRODUCT SPOTLIGHT

Troposcatter is often used for radio communications, normally for over the horizon links when satellite links are marginal or unavailable. Although Troposcatter requires high power transmitters, sensitive receivers, and high-gain antennas, it provides a very convenient data transmission system for many radio communication applications.

ARA offers a wide variety of designs for high power, high efficiency feeds for Troposcatter applications. Angle Diversity Troposcatter feeds are a specialty of ARA and are used to add another order of diversity in addition to frequency, polarization, and space. This capability enhances link fade margins and minimizes error rates.

All Troposcatter feeds are tailored for optimum use in specified parabolic reflectors. For systems using coaxial transmission lines, optional waveguides to rigid coax adaptors can be supplied separately or integrated into the feeds.

ARA


28 Riverside Drive, Pembroke, MA 02359
781-829-4740 | www.ara-inc.com

SEAVEY DIVISION



sales@ara-inc.com

FEATURES

- Custom Designs
- High Efficiency
- High Power
- Reflectors – 8ft, 10ft, 12ft
- Beyond Line-of-Sight Communications
- Optimum Performance
- Made in the USA 

Revised August 2020

Model	Frequency	Polarization	Isolation	VSWR	Power Handling	RF ports	Pressure Requirements	Dimensions
8875-800C	799 - 964 MHz	Dual Linear	Cross-pol ports: 30 dB	1.35:1	1 kW CW	EIA-7/8	1 PSIG Max	12" x 16 7/8"
8839-800C	1.7 - 2.1 GHz	Dual Orthogonal Linear	35 dB Min	1.35:1	2 kW	EIA-15/8	5 PSIG Max	5 1/2" x 2 1/4" x 21"
9938-800	1902 - 1970 MHz (side) 2146 - 2214 MHz (straight)	Dual Linear	-30 dB Min	1.25:1	2 kW CW	TNC-F	1/2 PSIG	11.5" x 11.5" x 25.58"
8447-804A	2.55 - 2.70 GHz	Dual Linear	37 dB Min	1.23:1	10 kW CW	UG-437A/U	5 PSIG	14" x 9.75" x 17"
8474-805D	4.4 - 5.0 GHz	Dual Linear	36 dB Min	1.35:1	5 kW CW Min	UG-407/U	2 PSI Max	6.1" x 9.18"
C2003-800A	4.4 - 5.0 GHz	Dual Linear	35 dB Nominal	1.3:1	5 kW CW	UG-1353/U	2 PSI	7.73" x 12.34" x 14.27"
C2002-850C	7.25 - 7.75 GHz	Dual Linear	35 dB Nominal	1.3:1	5 kW CW	UG-1359/U	2 PSI	4.93" x 7.48" x 8.32"

The data described herein is subject to licensing under the International Traffic Arms Regulations (ITAR) 22 CFR Parts 120-130. This data sheet has been released into the public domain in accordance with these regulations.

ARA

28 Riverside Drive, Pembroke, MA 02359
781-829-4740 | www.ara-inc.com

SEAVEY DIVISION