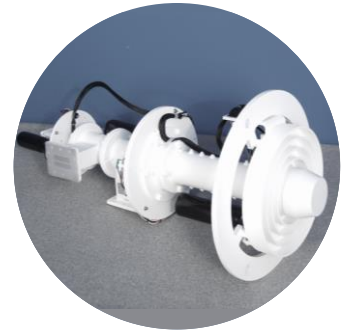
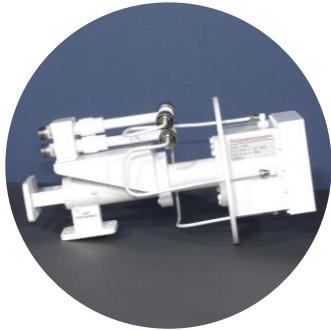




sales@ara-inc.com



MULTIBAND FEED AND ANTENNA SATCOM SERIES



ARA has a wide variety of Prime-Focus, Offset, Gregorian, and Cassegrain feeds and antennas for multiband applications. These multiband feeds are designed to minimize phase center movement. This helps to better focus the feed within the reflector for optimal gain, providing the highest possible EIRP and G/T.

ARA designs, simulates, manufactures, and tests all feed solutions in-house which can support FCC, ARSTRAT, and other applicable standards. ARA utilizes its fully staffed, Middleborough, MA outdoor test range to go beyond bench tests to ensure all specifications are met.

ARA also offers reflectors, positioners, and controllers to support antenna subsystems. This product family supports customer SATCOM Terminals and Ground Stations to enable connectivity to multiple constellations and networks without changing hardware.

ARA

28 Riverside Drive, Pembroke, MA 02359
781-829-4740 | www.ara-inc.com

SEAVEY DIVISION



sales@ara-inc.com

Revised October 2020

FEATURES

- Multiple Frequencies in a Single Feed
- Dual Polarization for Both Transmit and Receive
- Motorized or Non-motorized
- Optional Reflectors
- Optional Positioners and Controllers
- Made in the USA

Multiband SATCOM Frequencies (GHz)

Model	P-Band	L-Band	S-Band	C-Band	X-Band	Ku-Band	K-Band	Ka-Band
9409-800	230 - 280 MHz	1.1 - 1.2						
9385-800		1.95 - 1.98	2.2 - 2.3					
C1328-800C		1.15 - 1.35			9.4 - 9.8			
C2007-810		1.5 - 1.7	2.2 - 2.4	3.4 - 4.2		10.7 - 12.75		
0028-800D		1.698 - 1.707			8.0 - 8.5 GHz			
9317-820B			2.398 - 2.482	5.718 - 5.842				
9861-850D			1.65 - 2.4		7.1 - 8.5			
9861-870A			2.025 - 2.3		8.025 - 8.4			
C1916-800X			2.0 - 2.4				18.75 - 22.1	
9632-800				Rx: 4.0 - 4.2 Tx: 6.25 - 6.45				
0364-800F				3.4 - 4.2		10.70 - 12.75		
0408-800E				3.4 - 4.2		10.70 - 12.75		
C0717-800C				3.45 - 4.2		10.70 - 12.75		
C1203-800E				3.45 - 4.2		10.70 - 12.75		
0229-800E					7.1 - 7.7	10.95 - 12.75		
0229-825					7.1 - 7.7	10.95 - 12.75		
C1430-830X15						12.75 - 14.5		18.7 - 21.2 29.5 - 31.0

The data described herein is subject to licensing under the International Traffic Arms Regulations (ITAR) 22 CFR Parts 120-130. This data sheet has been released into the public domain in accordance with these regulations.

ARA

28 Riverside Drive, Pembroke, MA 02359
781-829-4740 | www.ara-inc.com

SEAVEY DIVISION



sales@ara-inc.com

Revised October 2020

FEATURES

- Multiple Frequencies in a Single Feed
- Dual Polarization for Both Transmit and Receive
- Motorized or Non-motorized
- Optional Reflectors
- Optional Positioners and Controllers
- Made in the USA 

Multiband SATCOM								
Model	Gain	Polarization	Power Handling	Isolation Port to Port	VSWR	Return Loss	Axial Ratio	Dimensions
9409-800								41" x 60"
9385-800	>44 dBi	RHCP						57.375" x 32"
C1328-800C		RHCP/LHCP			1.2:1		0.75 dB	8.75" x 13.75"
C2007-810		L-Band Dual CP S-Band Dual CP C-Band Dual Linear/ Dual Circular Selectable Ku-Band Dual Linear		Ku = 25 dB Min All Other Bands = 20 dB	1.9:1			27" x 13"
0028-800D		RHCP			1.33:1		2.0 dB Max	7.5" x 10.20"
9317-820B	S-Band: 19 dBi C-Band: 23.4 dBi				1.5:1			16.75" x 16.75"
9861-850D		Dual Circular			1.5:1		2.0 dB	6.75" x 13.66"
9861-870A		Dual Circular	200 W Max 100 W CW		1.5:1		2.0 dB	6.75" x 14.54"
C1916-800X		Dual Circular S, K	20 W		1.5:1		2.0 dB	12.2" x 6.75"
9632-800	14.0 dBi	Rx: RHCP Tx: LHCP			1.5:1		4.0 dB	9.25" x 6"
0364-800F	C-Band: 15.4dBi	C-Band: Dual Circular/ Linear Ku-Band: Dual Linear		C-Band: 17 dB Ku-Band: 27 dB	C-Band: 1.8:1 Ku-Band: 1.9:1		3.0 dB	51.02" x 28.2"
0408-800E			1 W Max	14 dB Circular 30 dB Linear	1.8:1		2.98 dB C-Band Circular 2 dB Ku-Band Circular	26.04" x 13"
C0717-800C		Ku Dual Linear C-Band Dual Linear, Dual Circular Switchable	1 W Max	20 dB Linear C-Band 30 dB Linear Ku-Band 12 dB Circular C-Band		9 - 10 dB	4.0 dB C-Band	13" x 27.59"
C1203-800E		Ku Dual Linear C-Band Dual Linear, Dual Circular Switchable	1 W Max	20 dB Linear C-Band 30 dB Linear Ku-Band 12 dB Circular C-Band		9 - 10 dB	4.0 dB C-Band	13" x 27.79"
0229-800E		X Dual Circular/ Ku Dual Linear		Ku = 35 dB		X = 1.5:1 Ku = 1.7:1	1.5 dB	6.8" x 6.0"
0229-825		X Dual Circular/ Ku Dual Linear		Ku = 35 dB		X = 1.5:1 Ku = 1.7:1	1.5 dB	8.25" x 10.5"
C1430-830X15		Ku Dual Linear/ Ka Dual Circular		Ku = 32 dB Min	Ku = 1.8:1 Max		Ka = 1.0 dB Typical	5.56" x 9.35" x 7.64"

ARA

28 Riverside Drive, Pembroke, MA 02359
781-829-4740 | www.ara-inc.com

SEAVEY DIVISION